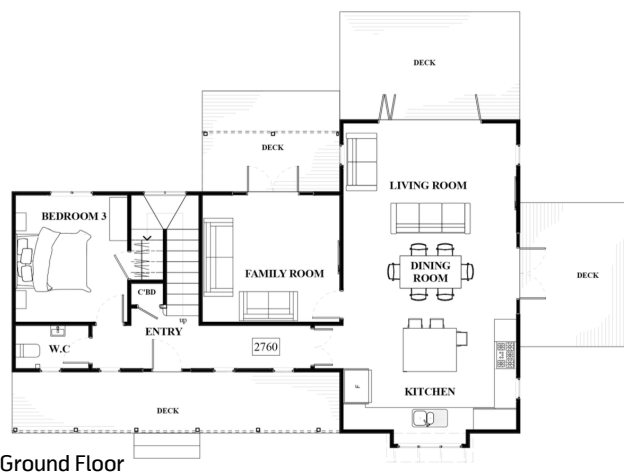
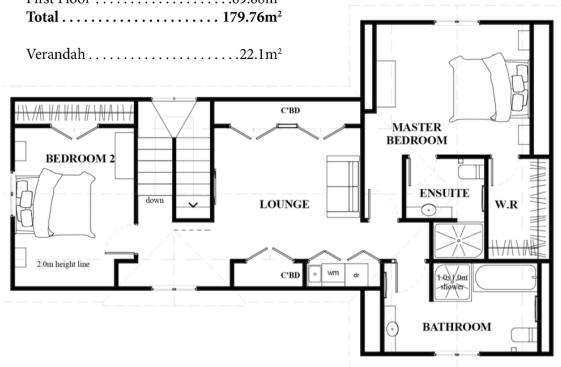


The Balmoral Design Plan



AREAS:

Ground Floor	89.88m ²
First Floor	89.88m ²
Total	179.76m²
Verandah	22.1m ²



An elegant 180m² home with 22m² of verandah, Open Plan Living, Separate Family Room with additional living space upstairs, 3 Generous Bedrooms - including a large master Suite, 2.5 Bathrooms

Suiting a variety of landscapes, The Balmoral home is classically beautiful with brick quoins, decorative gables, and classic simple fretwork.

The footprint is perfect for smaller sections, yet you will find this home to be extremely spacious. Generous with 3 good sized bedrooms across two floors and three living areas, this home has plenty of space for everyone.

The Balmoral was designed with purposeful attention to storage spaces also.





The Balmoral Design Plan



All our designs are completely customisable so if you'd like to widen or lengthen this design, flip it sideways, or change the layout - anything is possible to suit the needs of your family or property.

We are always available to chat through the options with you.

0508 40 30 20 | info@heritagehomes.nz | www.heritagehomes.co.nz |

 @heritagehomesnz 


HERITAGE
HOMES